



X-STREAM SERIES

Diesel Slip-On Pumps - HPX200-YD10

Features and Benefits

- **Diesel compatibility** — Refueling convenience with today's apparatus.
- **Hale 12 VDC Environmentally Safe (ESP) Primer** — Quicker priming and higher lift capabilities.
- **Exclusive band clamp design** — Quick and easy access for maintenance and repairs.
- **Diesel reliability** — Dependable, low-maintenance design.



PERFORMANCE RATINGS

250 GPM @ 10 psi
140 GPM @ 50 psi

40 GPM @ 100 psi
10 GPM @ 125 psi

Hale's newest addition to the diesel powered slip-on pump series offers the convenience of fuel compatibility with a diesel powered chassis. They combine all the benefits of a diesel engine—including safety, reliability, long life and low maintenance — with power and performance comparable to a gasoline driven unit.

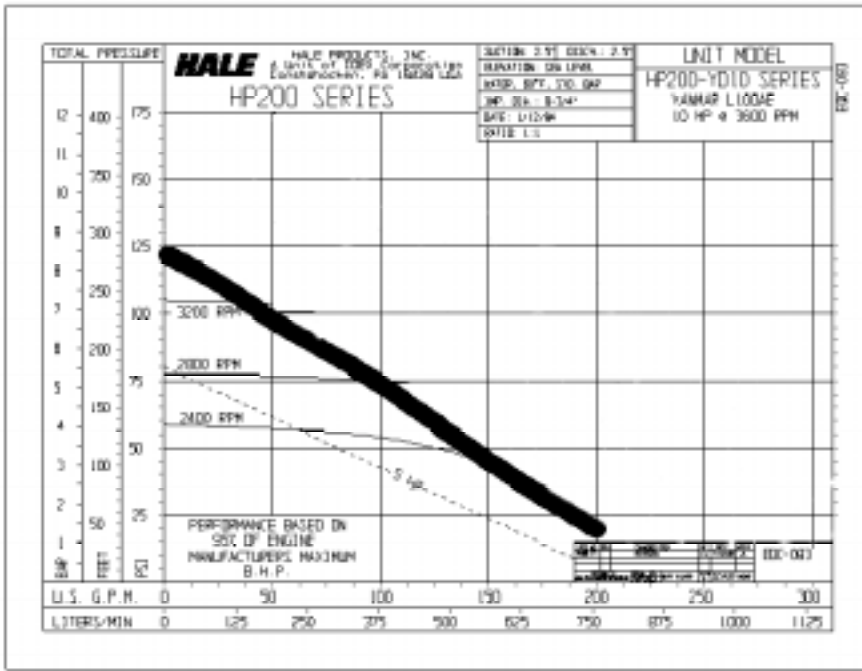
Hale offers this series of diesel pumps to satisfy a variety of field situations and requirements. The HPX200-YD10 has volumes up to 200 GPM (758 L/min) and pressures up to 125 PSI (13.25 bar).

The HPX200-YD10 Diesel Slip-On comes complete with a 12 Volt electric start ignition system. The fuel connections make it easy to use the vehicle's diesel tank for increased run time. The suction connection features a 2-1/2 inch NPT female thread for maximum efficiency in OEM installation and the discharge is a 2-1/2 inch NPT female connection.

The HPX200-YD10 is an ideal product for OEM installation. The pump is equipped for remotely connected throttle and stop controls.

Power is provided by a heavy duty Yanmar L100AE diesel engine and is supported by a world wide service center network.

A bronze enclosed impeller, bronze clearance ring and a self-adjusting, self-lubricating mechanical seal provide long life and low maintenance operation. The HP200X-YD10 has a volute constructed of a high strength, light weight alloy.



Pump Specifications

Pump:

Body and Head: Lightweight, high strength, corrosion resistant, aluminum alloy with smooth waterways for maximum performance.

Impeller: Bronze enclosed type, fully machined and balanced. Bronze impeller is high strength and resists corrosion. Smooth waterways increase efficiency.

Clearance Rings: Hard bronze renewable clearance rings allow for long life.

Shaft: Impeller is mounted directly to engine crankshaft.

Shaft Seal: Mechanical type for greater dependability. Easy and economical to maintain. Self-lubricating, self-adjusting mechanical seal for low maintenance and dependability.

Drain Cock: Brass

Priming: Complete with 12-volt DC ESP primer, shipped loose.

Weight: 130 pounds (13.61 kg)

Length: 20.84 inches (529 mm)

Width: 18.97 inches (190 mm)

Height: 21.57 inches (482 mm)

Engine

Make: Yanmar L100AE .46 Liter Diesel

Cycle: Four cycle

Horsepower: 10 HP @ 3600 RPM

Injection: Direct.

Cooling: Air cooled

Lubrication: Crankcase

Starting: Electric.

Control: Manual

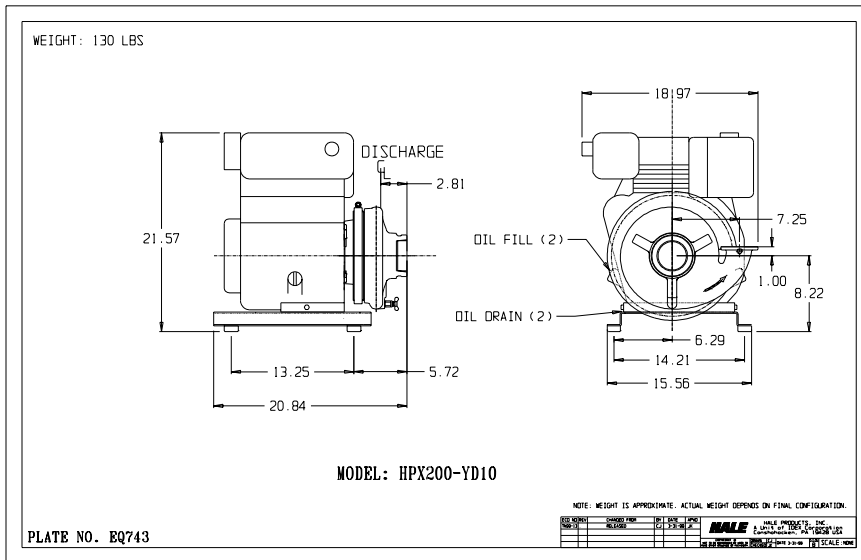
Air Filter: Dry type naturally aspirated

Standard Features

- Electric start
- Mounting feet
- Auto compression release
- Electric primer
- Manual recoil back-up

Options

Dual deluxe gauge panel



Hale Products
 A Unit of IDEX Corp.
 700 Spring Mill Avenue
 Conshohocken, PA 19428
 USA
 TEL: 610/825-6300
 FAX: 610/825-9615
 www.haleproducts.com

Hale Products Europe
 Charles Street
 Warwick, CV34 5LR
 England
 TEL: (44) 01926 825000
 FAX: (44) 01926 825066
 www.haleeurope.com

Hale Products Europe GmbH
 Industriegebiet-Nord
 Benzstrasse 4
 64807 Dieburg
 Germany
 TEL: (49) 06071 /92665
 FAX: (49) 06071 / 926677

Hale Products Asia
 Singapore Rep. Office
 63 Hillview Ave. #07-08
 Lam Sook Industrial Bldg.
 Singapore 669569
 TEL: (65) 764-3575
 FAX: (65) 764-4020

Note: Hale Products Inc. cannot assume responsibility for product failure resulting from improper maintenance or operation. Hale is responsible only to the limits stated in the product warranty. Product specifications contained in this material are subject to change without notice. Printed in U.S.A. Bulletin 846 6/99 © 1999, Hale Products Inc.

